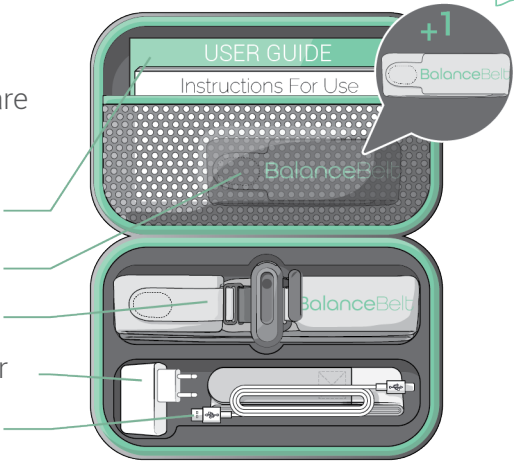


## 1. Unpack the Device

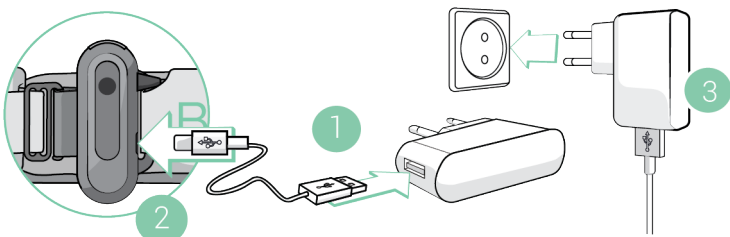


Ensure all components are included:

- User guide
- Extra sleeve
- BalanceBelt
- Power Adapter
- USB-C cable



## 2. Charging the Battery



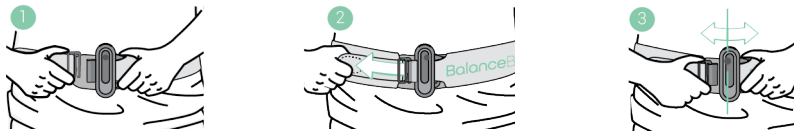
Connect the USB-C cable to BalanceBelt and the supplied power adapter. Plug into a wall outlet and charge for at least **6 hours** before first use. The battery will allow for 16 hours of continuous use. It is advised to charge the Belt regularly (overnight).

⚠ **Never wear the BalanceBelt when charging(!)**

## 3. Wearing the BalanceBelt



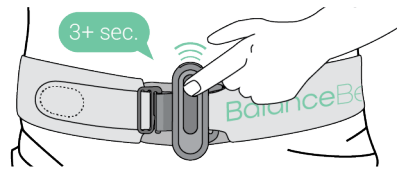
Wrap the BalanceBelt firmly around your waist over a fitted undershirt, ensuring the logo faces outward and the button is on top. A loose fit may reduce vibration effectiveness, so adjust the strap and Velcro for a secure fit. Center the buckle in the front.



## 4. Power ON



**Press and hold** the power button for **3+ seconds** until the LED blinks blue and the vibration motors activate in a circular pattern.



## 5. Using the BalanceBelt



The BalanceBelt detects your imbalance and signals your brain to trigger a corrective movement. This works subconsciously, so you should not pay any attention to the vibrations for the Belt to work.

### Walking with the BalanceBelt

When walking, the belt will give continuous feedback, this is normal. When standing still, the belt will only give feedback when you are out of balance.

### Automatic stop

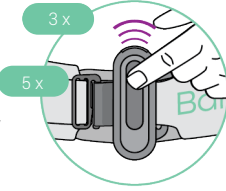
When you're in a stable position, for example when sitting or standing still, the belt will stop vibrating automatically.

### Standing up

When rising from a seated position, wait for the Belt to stop vibrating before beginning to walk. The Belt needs to calibrate before it can give proper feedback.

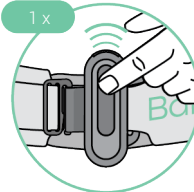
### Setting intensity of the vibrations

Press the button **three times** to switch to **High intensity** (Purple light) and another three times to return to **Standard intensity** (Green light). Press the button **five times** to switch to **Low intensity** (Yellow light) and another five times to return to **Standard**. Consult your physician to determine the best setting for you. The Belt always starts in 'Standard' intensity when powered on.



### Low Battery Indication

Pressing the button once will display the battery level: **4x Green = Full**, **3x Green = ¾ Full**, and so on. When the battery is nearly empty, the light remains **Yellow at 10%** and then **Red at 5%**, after which the Belt will shut down. A warning vibration will signal the transition to Yellow, Red, and eventual shutdown.



### Travelling

Some people prefer wearing the Belt while traveling by car, bus, train or airplane while others do not. You can easily turn the Belt on or off based on your preference. Just remember to switch it on when getting up from your seat.

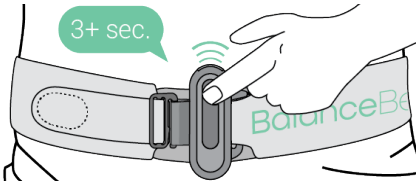
### Walking outside

It is advised to set the BalanceBelt to increased intensity when walking outside or when cycling.

## 6. Turning OFF



Press and hold the power button for **3+ seconds** to turn the Belt off. The LED **blinks blue**, and three subtle vibrations confirm shutdown.



<div><b>Device Identification &amp; Manufacturer Information</b></div> <div><b>Device name:</b> BalanceBelt</div> <div><b>Manufacturer:</b> Elitac BalanceBelt BV,</div> <div><b>Address:</b> Nijverheidsweg 16B, 3534 AM Utrecht, The Netherlands,</div> <div><b>Website:</b> <a href="http://www.balancebelt.net">www.balancebelt.net</a></div> <div><b>Support Contact:</b> <a href="mailto:info@balancebelt.net">info@balancebelt.net</a></div>	<div><b>Intended Use</b></div> <div><ul style="list-style-type: none"><li>☑ The BalanceBelt is intended for individuals experiencing impaired balance due to severe vestibular loss</li><li>☑ Suitable for all age groups, including children once they begin to move independently, subject to a physician's assessment.</li><li>☑ The fitting and initial balance assessment should take place in a controlled clinical setting under the supervision of a healthcare professional or physician.</li><li>☑ Classified as a Class 1 medical device, the BalanceBelt aims to enhance the quality of life for individuals affected by BVL and similar conditions.</li></ul></div>
<div><b>Contraindications</b></div> <div><ul style="list-style-type: none"><li>☑ Not suitable for individuals with non-vestibular balance disorders (e.g., neurological origins).</li><li>☑ Not to be used with other medical aids that could be affected by vibrations.</li></ul></div>	<div><b>Battery &amp; Charging</b></div> <div><ul style="list-style-type: none"><li>☑ Rechargeable Li-ion battery, 16-hour operation time. Charge using only the supplied USB-C adapter.</li><li>☑ Battery status indicated via LED by pressing button (only when switched on).</li></ul></div>
<div><b>Storage &amp; Handling</b></div> <div><b>Operating &amp; charging temperature:</b> 10°C - 40°C.</div> <div><b>Storage temperature:</b> -20°C to 45°C.</div> <div><div>⚠ Do not expose to extreme conditions.</div></div>	<div><b>Warnings &amp; Precautions</b></div> <div><ul style="list-style-type: none"><li>⚠ Read instructions before use.</li><li>⚠ Must be worn around the waist</li><li>⚠ Maintain a 15 cm distance from pacemakers and ICDs.</li><li>⚠ Does not prevent falls.</li><li>⚠ Do not submerge in water or expose to heavy rain.</li><li>⚠ Do not modify, disassemble, or replace components.</li><li>⚠ Use only official accessories.</li><li>⚠ Not for use in industrial environments.</li><li>⚠ Check device for damage before each use.</li></ul></div>
<div><b>Troubleshooting</b></div> <div><div><div><b>Blue continuously or slow blinking</b></div><div>&gt;</div><div>System issue detected.</div><div><b>Solution:</b> Restart the device. If the issue persists, contact the supplier.</div></div><div><div><b>The BalanceBelt does not vibrate or keeps vibrating constantly</b></div><div>&gt;</div><div>Calibration issue or system malfunction.</div><div><b>Solution:</b> Restart the device. If the issue persists, contact the supplier.</div></div><div><div><b>BalanceBelt restarts during use</b></div><div>&gt;</div><div>System detected an unsolvable problem.</div><div><b>Solution:</b> Restart the device. If the issue persists, contact the supplier.</div></div><div><div><b>Circular vibration pattern at startup is uneven or missing a section</b></div><div>&gt;</div><div>one of the vibration motors may be faulty.</div><div><b>Solution:</b> Contact the supplier.</div></div></div>	<div><b>Cleaning &amp; Maintenance</b></div> <div><p>Only the detachable fabric sleeve is washable—refer to the care instructions on the sleeve. For replacement guidance, see the Full Instructions for Use.</p><div><div>⚠ Do not wash electronic components—clean the buckle and button with a dry cloth.</div></div></div>
<div><b>Disposal</b></div> <div><div><div>⚠ Dispose of according to <b>WEEE</b> regulations.</div><div>⚠ Do not discard with household waste.</div></div><div></div></div>	<div><b>Full Instructions for Use (IFU)</b></div> <div><div><p>Scan the QR code or visit <a href="http://www.balancebelt.net/en/IFU">www.balancebelt.net/en/IFU</a> to download the latest IFU.</p><p>Need a printed copy? Contact <a href="mailto:info@balancebelt.net">info@balancebelt.net</a></p></div><div></div><div></div></div>
<div><b>Regulatory Compliance</b></div> <div><div><div>CE marked. Complies with MDR 2017/745 and relevant EU directives: 2001/95/EC - 2014/30/EU - 2011/65/EU - 2012/19/EU – 94/62/EC – 2006/66/EC – regulation (EC) No 1907/2006</div><div></div></div></div>	